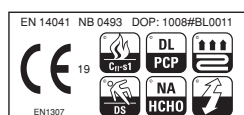


MIRACLE



MAVERICK®
COMMERCIAL CARPET & TILES

Type of manufacture (wall-to-wall carpet) Art der Herstellung (Teppichboden) Methode de fabrication (moquette)	ISO 2424		1/10 Cut Pile (tufted)
Width Abmessungen Largeur		cm	400
Primary backing Trägermaterial Premier dossier	ISO 2424		Polypropylene woven
Secondary backing Rückenausrüstung Envers sous-couche	ISO 2424		Polypropylene woven
Pile fibre composition Faserzusammensetzung der Nutzschicht Composition du velours	ISO 2424		iMax® 100% Solution Dyed Nylon (SDN)
Total thickness Gesamtdicke Epaisseur totale	ISO 1765	mm	7,8
Effective pile thickness Polschichtdicke Epaisseur du velours	ISO 1766	mm	5,5
Total mass Gesamtgewicht Masse surfacique totale	ISO 8543	g/m ²	2.150
Total pile mass Poleinsatzgewicht Masse surfacique de velours totale	ISO 2424	g/m ²	1.150
Effective pile mass Polschichtgewicht Masse surfacique de velours utile	ISO 8543	g/m ²	958
Pile density Pol-Rohdichte Densité du velours	ISO 8543	g/cm ³	0,173
Number of tufts Noppenzahl Nombre de touffes	ISO 1763	/dm ²	2.130
Static electrical propensity Begehtest Test du marcheur	ISO 6356	kV	≤ 2
Use classification Beanspruchungsbereich Classement d'usage	EN 1307		33 Contract use - Heavy 33 Objektbereich - Extrem 33 Professionnel - Intensive
Luxury rating Komfortklasse Classement de confort	EN 1307		LC4
Impact sound reduction ΔLw Trittschallverbesserungsmaß ΔLw Réduction du bruit de choc ΔLw	ISO 10140	dB	30
Sound absorption Schallabsorption Absorption phonique	ISO 354	Freq. Hz	125 250 500 1000 2000 4000
		αs	0,02 0,04 0,08 0,25 0,43 0,54
Noise reduction Schallreduktion Réduction phonique	ISO 354	αw	0,20
Thermal resistance Wärmedurchlaßwiderstand Résistance thermique	ISO 8302	m ² .K/W	0,13
Flammability Brennverhalten Tenue au feu	EN 13501-1		Cfl - s1 Loose laid on a non-combustible substrate (20/331)
Prodis - GUT	www.pro-dis.info		539B491D
DOP			1008#BL0011

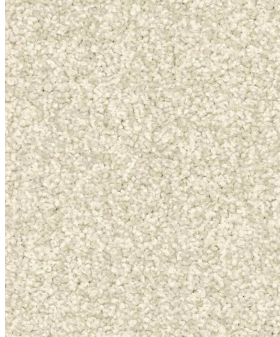


Update 08/2020

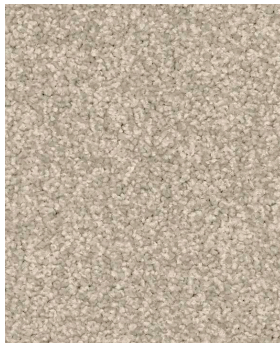
MIRACLE



MAVERICK®
COMMERCIAL CARPET & TILES



30 4m



35 4m



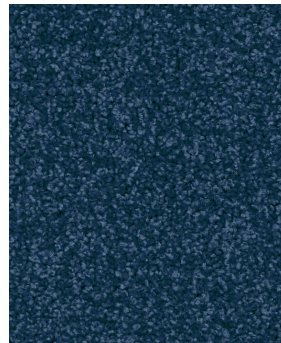
74



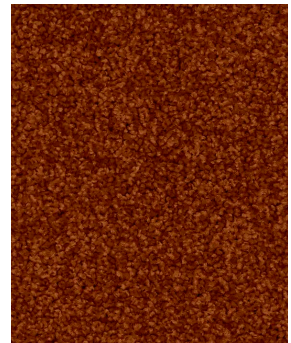
49 4m



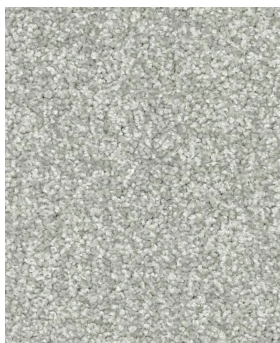
70 4m



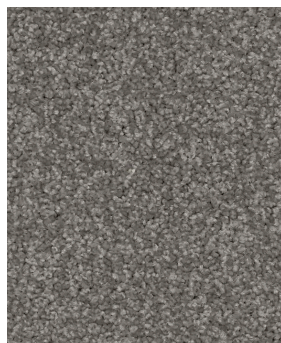
74 4m



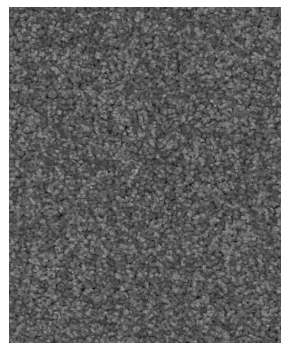
84 4m



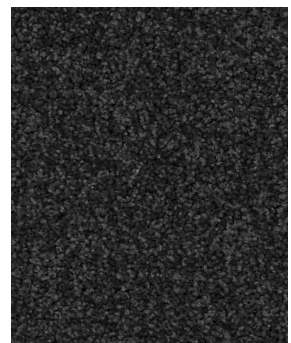
90 4m



95 4m



97 4m



99 4m

Update 08/2020

Associated Weavers Europe NV - Industriepark Klein Frankrijk - Weverijstraat 1 - 9600 Ronse - Belgium
T +32 55 230 211 - F +32 55 215 551 - www.associated-weavers.com